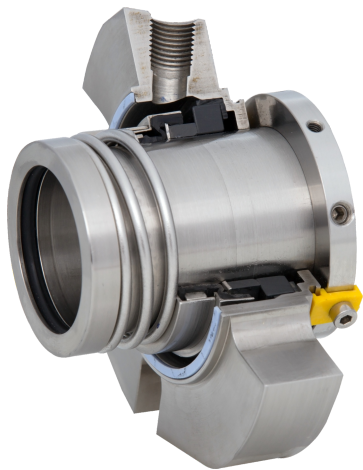


UTX Single Seals

Standard Cartridge Seals

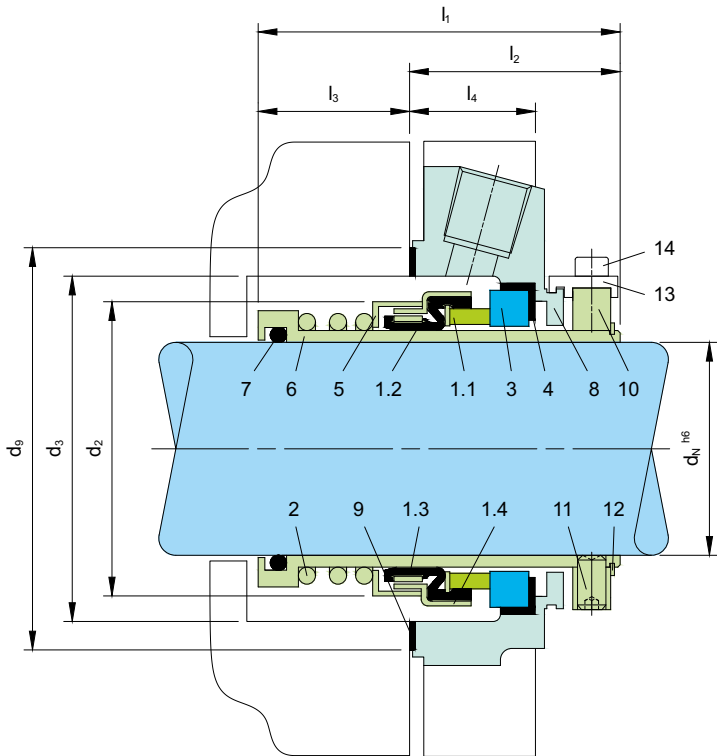


Product Description

- 1. Single seal configuration
- 2. Unbalanced design
- 3. Independent of direction of rotation
- 4. Cartridge construction

Technical Features

- 1. Ideal for use in process pump standardization
- 2. Flushing connection according to API 682, Plan 11 for seal chamber cleaning and cooling
- 3. Low cost cartridge solution
- 4. Dimensional modification of the stuffing box chamber is not required due to short radial installation height
- 5. Ideal to convert and retrofit pumps with packings and large volume OEM production
- 6. Cartridge unit factory assembled for easy installation, which reduces down-time
- 7. Rugged design for long operating life



Note: The item numbers as depicted above are based on our technical experience and knowledge and are placed in the chronological order of their assembly procedure.

Item	Description
1	Bellows unit
1.1	Seal face
1.2	Bellows
1.3	Drive collar
1.4	L-ring (spring collar)
2	Spring
3	Seat
4	O-ring or L-ring
5	Spacer ring

Item	Description
6	Shaft sleeve
7	O-ring
8	Cover
9	Gasket
10	Drive collar
11	Set screw
12	Snap ring
13	Assembly fixture
14	HSH Cap Screw

Typical Industrial Applications

ISO process pumps	Food & beverage
Acids	Hydrocarbons
Aqueous solutions	Lubricating liquid
Caustics	Marine
Chemicals	Petrochemical
Crystallizing fluids	Pharmaceutical
Fertiliser	Solvents

Materials

Seal face	Carbon graphite resin impregnated (B), Silicon carbide (Q1),
Seat	Silicon carbide (Q1)
Secondary seals	FKM (V), EPDM (E)
Metal parts	CrNiMo steel (G), CrNiMo cast steel (G)

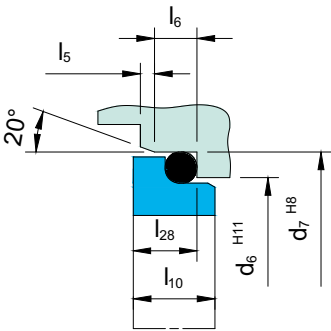
Performance Capabilities

Sizes	Upto 75 mm (1" ... 2.625")
Pressure	p ₁ = 12 bar (174 PSI)
Temperature	t = -20°C...+140°C (-4°F...+284°F)
Speed	10 m/s

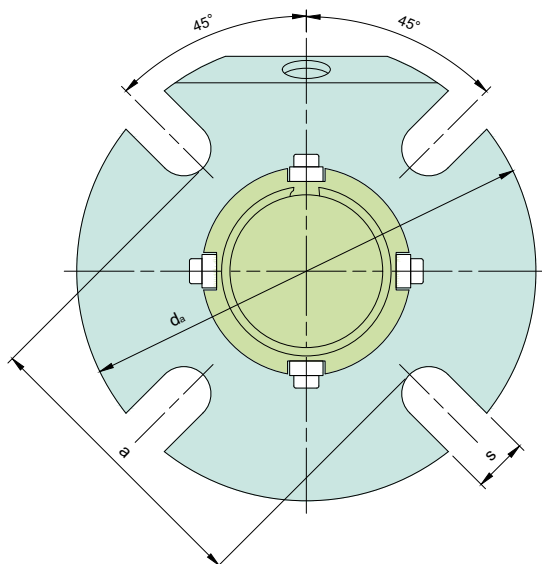
Axial Movement:

± 0.5mm

Stationary Seats



G6
(EN 12756)



Dimensional Data

Dimensions in inch

d _N	d ₂	d ₃ min	d ₃ max	d ₉	d _a	a	s	l ₁	l ₂	l ₃	l ₄	Connection
1.000	1.512	1.634	2.000	2.362	4.134	2.440	0.520	2.579	1.614	0.965	0.906	1/4 NPT
1.125	1.669	1.750	2.050	2.362	4.134	2.441	0.520	2.677	1.634	1.043	0.906	1/4 NPT
1.250	1.772	1.890	2.250	2.559	4.331	2.638	0.520	2.736	1.654	1.083	0.906	1/4 NPT
1.375	1.933	2.000	2.420	2.677	4.213	2.756	0.520	2.854	1.732	1.122	1.024	1/4 NPT
1.500	2.020	2.146	2.625	2.874	4.843	2.950	0.579	2.854	1.732	1.122	1.024	1/4 NPT
1.750	2.354	2.480	2.812	3.110	5.118	3.230	0.559	3.012	1.752	1.260	1.024	1/4 NPT
1.875	2.433	2.559	2.940	3.228	5.118	3.307	0.559	3.071	1.772	1.299	1.024	1/4 NPT
2.000	2.598	2.677	3.190	3.346	5.827	3.430	0.579	3.169	1.850	1.319	1.102	3/8 NPT
2.125	2.795	2.875	3.437	3.740	5.512	3.820	0.689	3.287	1.850	1.437	1.102	3/8 NPT
2.250	2.874	2.992	3.560	3.780	6.181	3.858	0.689	3.287	1.850	1.437	1.102	3/8 NPT
2.375	3.012	3.110	3.590	3.937	6.181	4.020	0.689	3.366	1.850	1.516	1.102	3/8 NPT
2.500	3.209	3.287	3.800	4.173	6.693	4.252	0.689	3.465	1.909	1.555	1.102	3/8 NPT
2.625	3.268	3.374	3.937	4.252	6.378	4.331	0.689	3.465	1.909	1.555	1.102	3/8 NPT

Dimensions in millimeter

d _N	d ₂	d ₃ min	d ₃ max	d ₆	d ₇	d ₉	d _a	a	s	l ₁	l ₂	l ₃	l ₄	l ₅	l ₆	l ₁₀	l ₂₈	Connection
25	38.4	41.5	51.0	34.0	40	60	105	62	13.2	65.5	41.0	24.5	23	2	5	8.5	7.5	1/4 NPT
28	42.4	44.5	52.0	37.0	43	60	105	62	13.2	68.0	41.5	26.5	23	2	5	8.5	7.5	1/4 NPT
30	42.4	45.5	56.0	39.0	45	63	105	67	13.2	68.0	41.5	26.5	23	2	5	8.5	7.5	1/4 NPT
32	45.0	48.0	57.2	42.0	48	65	110	67	13.2	69.5	42.0	27.5	23	2	5	8.5	7.5	1/4 NPT
33	45.0	48.0	57.0	42.0	48	65	110	67	13.2	69.5	42.0	27.5	23	2	5	8.5	7.5	1/4 NPT
35	49.0	50.8	61.5	44.0	50	68	107	70	13.2	72.5	44.0	28.5	26	2	5	8.5	7.5	1/4 NPT
38	51.3	54.5	66.0	49.0	56	73	123	75	14.7	72.5	44.0	28.5	26	2	6	10	9	1/4 NPT
40	54.3	57.5	68.0	51.0	58	75	123	77	14.7	75.5	44.5	31.0	26	2	6	10	9	1/4 NPT
43	56.3	59.5	70.5	54.0	61	78	133	80	14.7	76.5	44.5	32.0	26	2	6	10	9	1/4 NPT
45	61.0	63.0	73.0	56.0	63	79	130	82	14.2	76.5	44.5	32.0	26	2	6	10	9	1/4 NPT
48	61.8	65.0	75.0	59.0	66	82	130	84	14.2	78.0	45.0	33.0	26	2	6	10	9	1/4 NPT
50	66	68.0	78.0	62.0	70	85	148	87	14.7	80.5	47.0	33.5	28	2.5	6	10.5	9.5	3/8 NPT
53	71.0	73.0	87.0	65.0	73	95	148	97	17.5	81.5	47.0	34.5	28	2.5	6	12	11	3/8 NPT
55	71.0	73.0	83.0	67.0	75	90	148	92	17.5	83.5	47.0	36.5	28	2.5	6	12	11	3/8 NPT
60	76.5	79.0	91.0	72.0	80	100	157	102	17.5	85.5	47.0	38.5	28	2.5	6	12	11	3/8 NPT
65	83.0	85.7	98.5	77.0	85	108	162	110	17.5	88.0	48.5	39.5	28	2.5	6	12	11	3/8 NPT
70	88.0	94.0	108.0	83.0	92	116	178	118	17.5	92.0	48.5	43.5	28	2.5	7	12.5	11.3	3/8 NPT
75	93.4	98.4	118.0	88.0	97	125	190	127	17.5	93.5	49.0	44.5	28	2.5	7	12.5	11.3	3/8 NPT
80	97.0	115.0	125.0	95.0	105	131	202	134	18.0	93.5	49.0	45.5	28	3	7	13	12	3/8 NPT

Note: Additional technical & dimensional information will be provided on request

The specifications, drawings, images etc included in this catalogue are intended to be generic and must be interpreted as equivalent or functionally equivalent, more specifically the performance capabilities mentioned in this catalogue is based on optimum values, however the performance of the product is dependent on size, material of construction, media, pressure, temperature, sliding velocity etc and it shall vary from size to size or application to application. Customers are requested to consult with Sealmatic before employing the product from this catalogue for any application.